



SAIRI FORSMAN

SCULPTURE

AVAILABLE ARTWORK

A person wearing a yellow and blue striped shirt is working with clay. They are using their hands to shape a piece of clay on a wooden table. The table is covered with a layer of clay and some debris. In the background, there is a white wall and a framed picture.

ABOUT

SAIRI

FORSMAN

Sairi Forsman was born in Mexico City. Her father was the Finnish composer John Vainö Forsman. He came from a family of artists: several members of the Forsman family made many important contributions to the cultural life in Finland, so it was natural for her to follow an artistic path.

In her early works, an expressionistic trend reflected emotions that were described by strong, harsh features carved deeply into clay.

After this period of mere raw expression, Sairi took much of her inspiration from modern art and cubism, only to create tangled bodies and knot-forms with rounded outlines that tell stories about couples tied up in love-hate relationships and/or self-entanglements.

Continuing with her creative process, she unraveled this "knot-confusion" and the representation of the human body regained its inner memory and its most traditional, almost realistic shape.

Elongated figures became the new characters. The highlight of this period is "The Cannibal". This piece appeared with great breadth and a life of its own. Although the sculptor achieved something unique with this sculpture and could have stayed sculpting "in the same style", she changed again. She began diminishing the volume of her sculpture and ended up reducing the human bodies until they reached their final consequence: bones, vertebrae, spines. In her own words: "The skeleton is not necessarily a representation of death. It is our structure; it supports an original perspective of the human being immersed in his own interiority. Bones became limits, outlining space, redefining the concepts of emptiness and void."

Being on this quest, she came across real skeletons of fish, whales, birds and other animals. Bones became the material to produce new work: not to be redundant and make more “skeletons out of skeletons”, she has been making objects, exo-skeletons (dresses) and anecdotic scenes. Figuration has been tremendously vital and powerful in the making of her art-work. It has given her the possibility to tell stories, re-create sensations, feelings and/or states of mind. She is always eager to experiment, to change, sculpting at her own rhythm her own force of life.

ABOUT EXPOSURE

Her work has been commissioned for public spaces like the Poliforum Cultural Siqueiros, an apartment building by architect Carlos Gosselin and for some private collectors in Europe, USA and Latin America. Her work has been featured in Artes de Mexico magazine, Architectural Digest (in Spanish) magazine, Allgemeines Künstlerlexikon/AKL (The Artists of the World) among others.

Sairi won a fellowship at the Nordic Arts Center in Helsinki.

She has participated in collective and one-man exhibitions in Mexico City, San Miguel de Allende, New York, Los Angeles, Miami, Atlanta, San Antonio and Chicago.

1

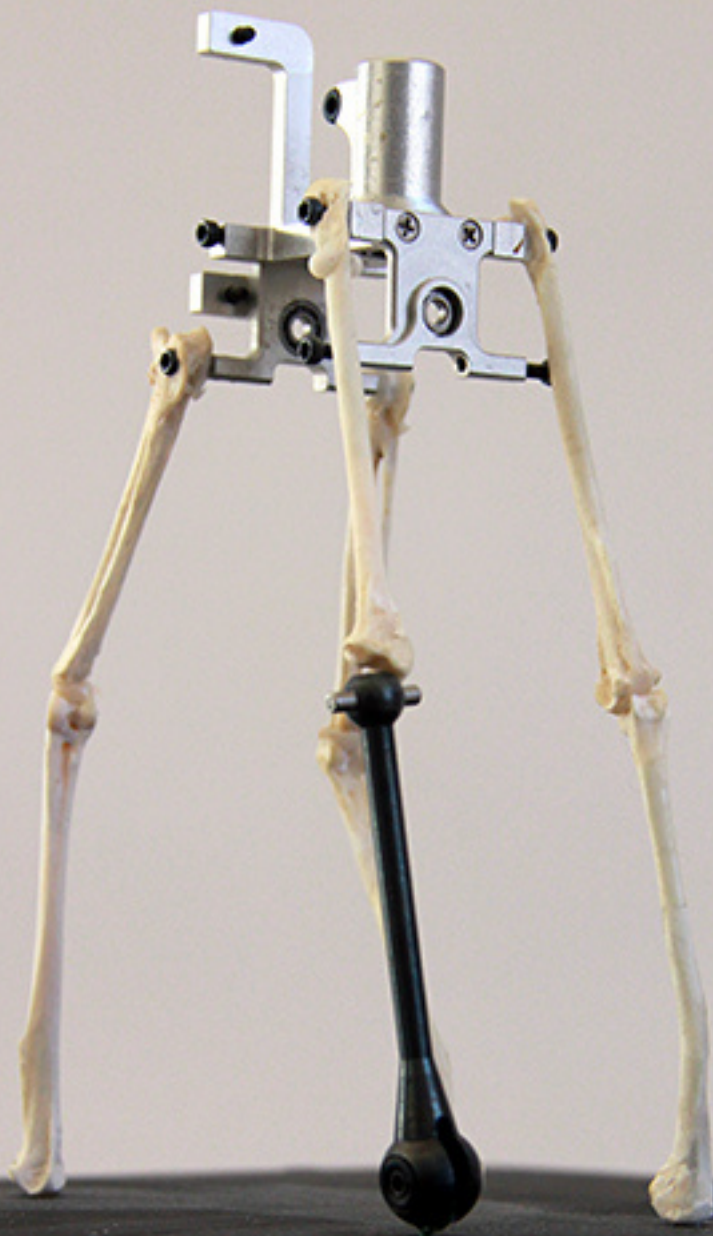
Bone/Mechanical Pieces





CYBORG DOG 2020

bones & mechanical pieces
19 cm x 19 cm x 24 cm h
unique piece



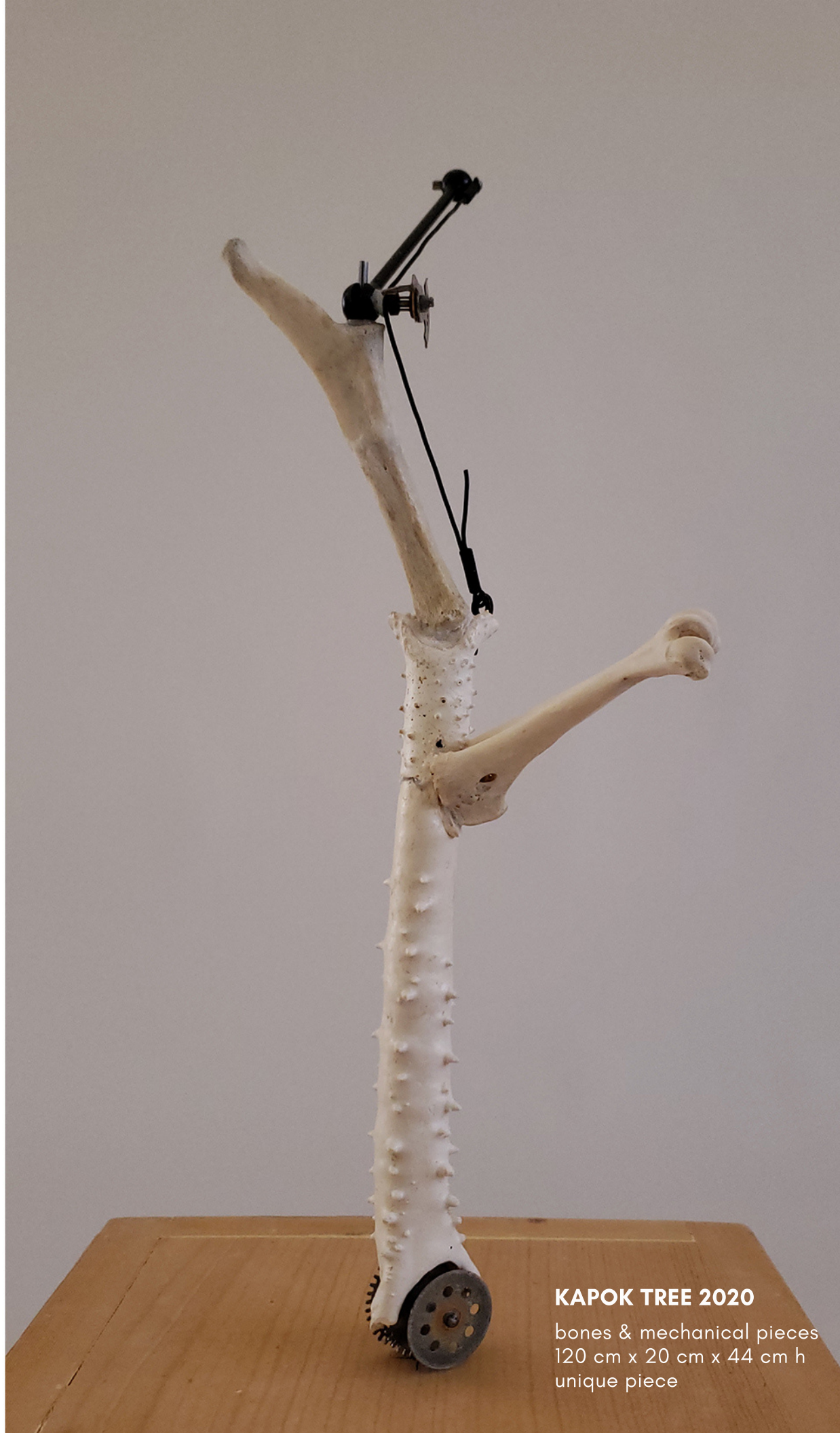
**CYBORG DOG
(detail) 2020**

bones & mechanical pieces
19 cm x 19 cm x 24 cm h
unique piece



MACHINA TARCHIA
2020

bones & mechanical pieces
19 cm x 19 cm x 34 cm h
unique piece



KAPOK TREE 2020

bones & mechanical pieces
120 cm x 20 cm x 44 cm h
unique piece



FREE WILL 2020

bones & mechanical pieces
19 cm x 19 cm x 24 cm h
unique piece

2

Bone Sculptures



WEDDING DRESS 2009

bones
19 cm x 19 cm x 24 cm h
unique piece SOLD



SOME SAMPLES 2009

bones
11.5 cm x 20 cm x 27 cm h
unique piece



**SOME SAMPLES
(detail) 2009**

bones
11.5 cm x 20 cm x 27 cm h
unique piece



**GIACOMETTI'S XMAS
TREE 2007**

bones
10 cm x 19 cm x 19 cm h
unique piece



DRAG QUEEN 2010

bones
11.5 cm x 19 cm x 1.30 m h
unique piece



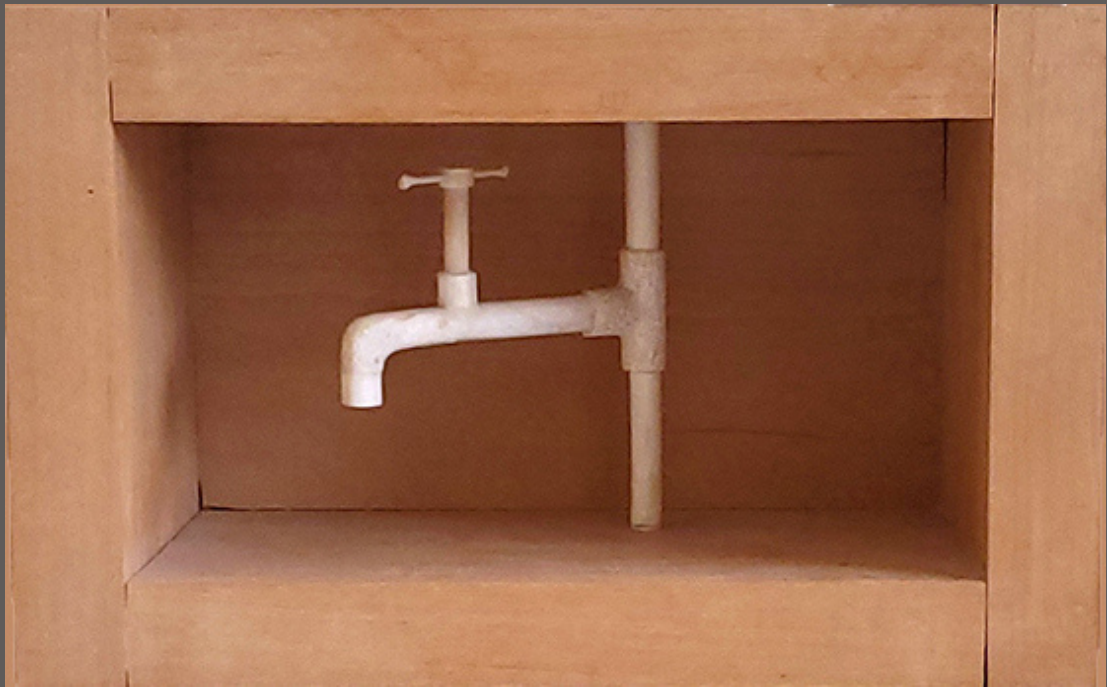
DRAG QUEEN (detail)
2010

bones
11.5 cm x 19 cm x 20 cm h
unique piece



DRAG QUEEN (detail)
2010

bones
11.5 cm x 19 cm x 26 cm h
unique piece



DRAG QUEEN (detail)
2010

bones
11.5 cm x 19 cm x 13 cm h
unique piece



DRAG QUEEN (detail)
2010

bones
11.5 cm x 19 cm x 26 cm h
unique piece



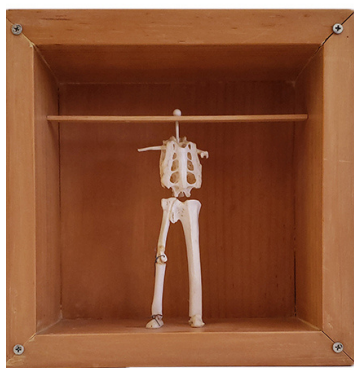
**CONSUELO'S CHAIR
2009**

bones, wooden box
10 cm x 19 cm x 19 cm h
unique piece



ORNITHOPTER 2007

bones
10 cm x 10 cm x 19 cm h
unique piece



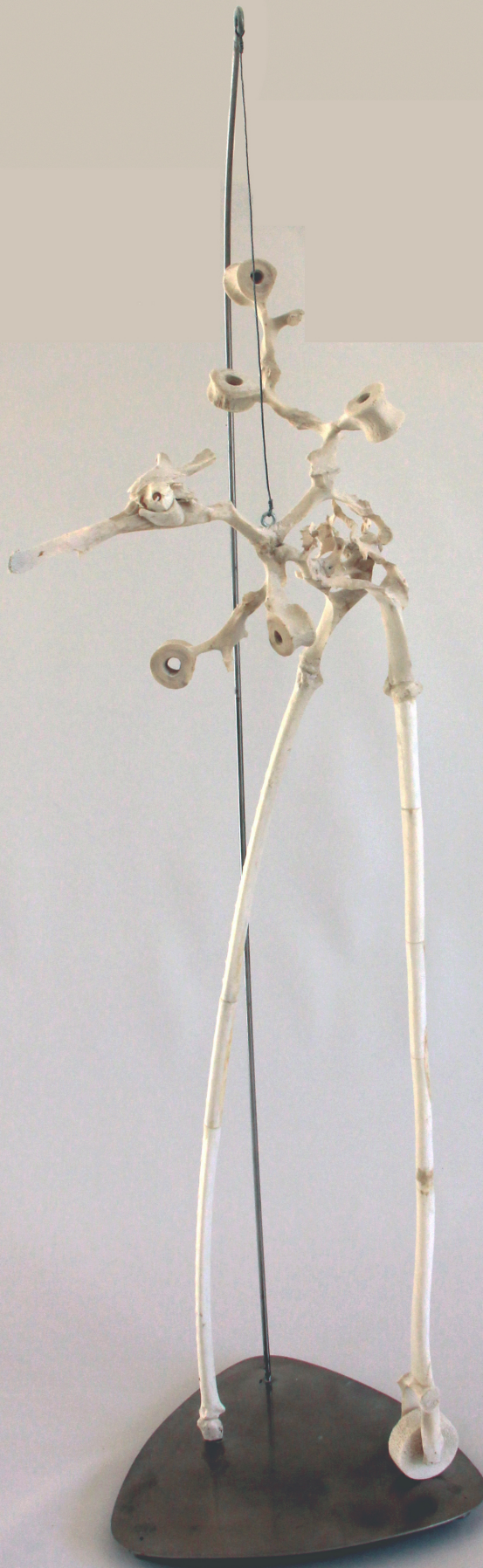
SPRING COLLECTION 2007

bones, wooden cases
10 cm x 19 cm x 19 cm h (each box)
unique piece



**SPRING COLLECTION
(detail) 2007**

bones, wooden cases
10 cm x 19 cm x 29 cm h
unique piece



LEAFY DRAGON 2010
bones
25 cm x 25 cm x 1.02 m h
unique piece



**LAYING TOO BIG AN
EGG 2008**
bones, ostrich egg
30 cm x 30 cm x 30 cm h
unique piece

3

Bronze Sculptures



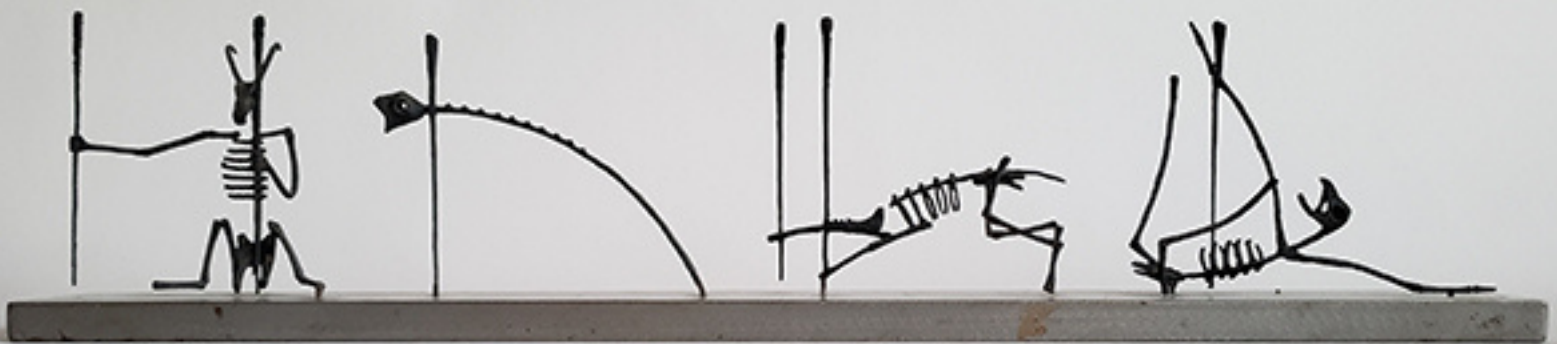
PHOENIX II (detail)
2004

bronze
7.5cm x 7.5 cm x 31 cm h
unique piece



PHOENIX II 2004

bronze
7.5cm x 7.5 cm x 31 cm h
unique piece



PINNED ANIMALS 2000

sterling silver
5 cm x 45 cm x 10 cm h
unique piece



ENLIGHTENMENT 2000

sterling silver
5 cm x 5 cm x 13 cm h
edition 4/5



THE ANGRY GOD 1986

bronze

13 cm x 10 cm x 27 cm h

edition 5/ 5



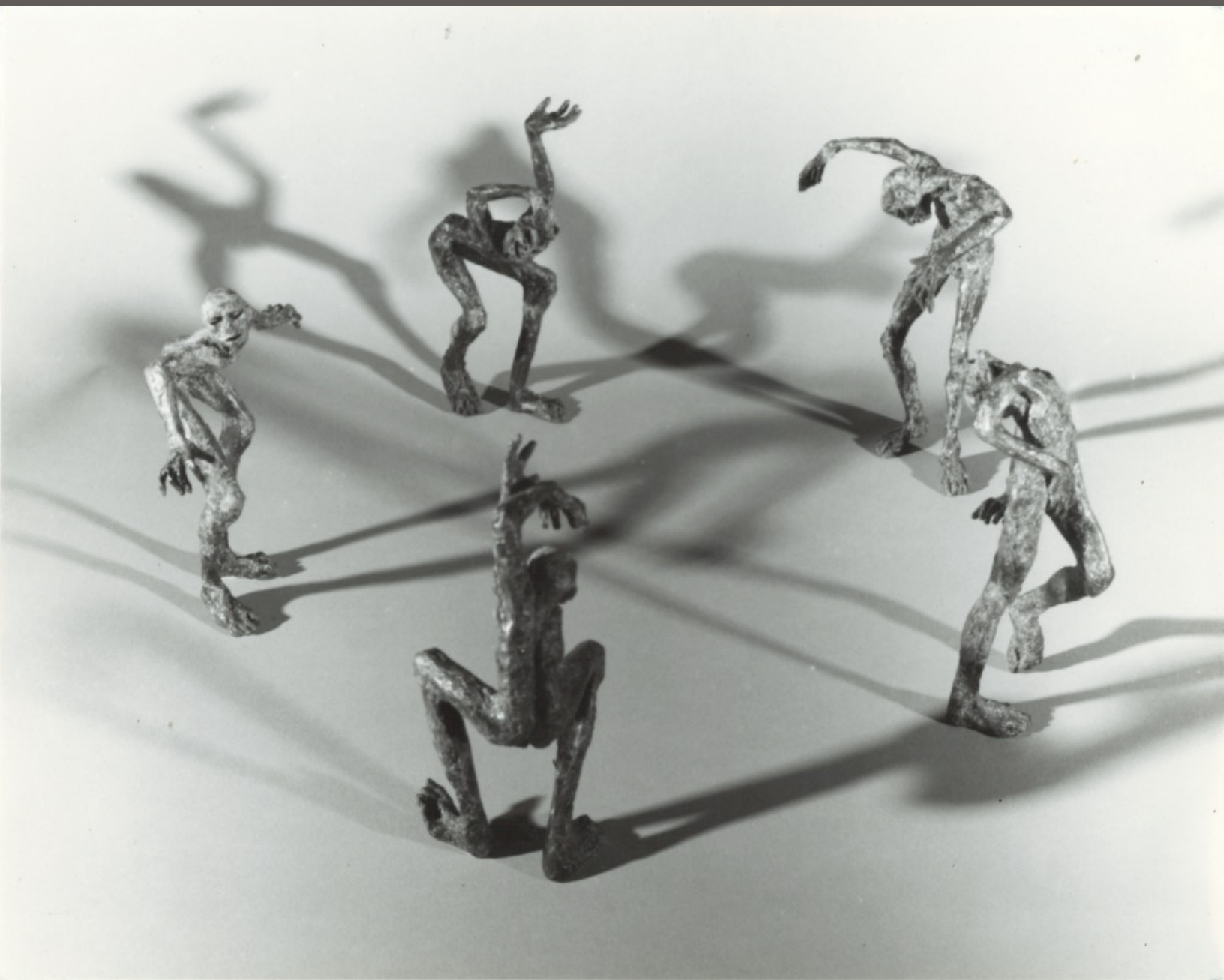
GOATS 2005

bronze
24 cm x 76 cm x 23 cm h
unique piece



GOATS 2005 (detail)

bronze
24 cm x 76 cm x 23 cm h
unique piece



AU PRINTEMPS 1992

bronze
80 cm diam. x 20 cm h
edition 5/5



AU PRINTEMPS (detail)
1992

bronze
80 cm diam. x 20 cm h
edition 5/5

4

Large Scale Pieces



**LITTLE RED RIDING
HOOD (front) 2020**

bones & resin
25 cm x 46 cm x 1.07 m h
unique piece



**LITTLE RED RIDING
HOOD (back) 2020**

bones & resin
25 cm x 46 cm x 1.07 m h
unique piece



**LITTLE RED RIDING
HOOD (front) 2020**

bones & resin
25 cm x 46 cm x 1.07 m h
unique piece



FANTASY I 1990

xaltoca stone
one cubic meter
unique piece



FANTASY I 1990

xaltoca stone
one cubic meter
unique piece



FANTASY | 1990

xaltoca stone
one cubic meter
unique piece



**MIHUANI - THE
CANNIBAL 1992**

bronze
70 cm x 132 cm x 40 cm h
unique piece



AU PRINTEMPS I 2003

bronze
40 cm x 90 cm x 1 m h
edition 2/5



PHOENIX II 2004

bronze
60 cm diam. x 3 m h
edition 1/5



SAIRI FORSMAN

Cabo San Lucas, Mexico 2020.

(624)157 6550

sairiforsman@gmail.com